

Please visit www.element14.com/warp7 for additional information and resources including:

Documentation

Hardware guide, data sheets, schematics and more

Software and Development Tools

Download the latest tools, source code, Android and Linux, images for programming the WaRP7 board

Discussion and Support

Find answers to FAQ, post questions and contribute to the community.

WaRP7

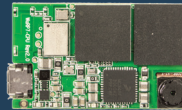
Next Generation Internet of Things and
Wearable Development Platform

WaRP7 development platform has been designed to facilitate and expedite internet of things and wearable design.

The Kit comprises of:

- WaRP7 CPU board
- WaRP7 IO board
- Lithium-Polymer battery
- [Optional] Color LCD with touch (available separately)

WaRP7 CPU Board



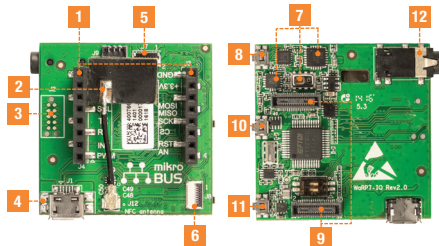
WaRP7 IO board



Lithium-Polymer battery

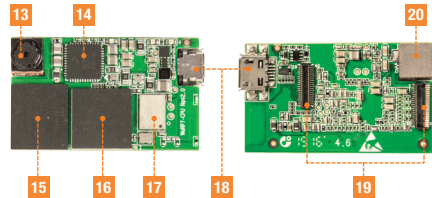


WaRP7 IO Board



- | | |
|--|--|
| <ul style="list-style-type: none"> 01. Expansion Connectors 02. NFC Antenna 03. JTAG Connector 04. Debug USB 05. MIPI DSI Connector 06. LCD Touch Interface 07. Sensors (Altimeter, | <ul style="list-style-type: none"> Accelerometer-Magnetometer, Gyroscope) 08. S1 - Reset Button 09. Board to board connector 10. S2 - User Defined button 11. S3 - On/Off 12. Audio Jack |
|--|--|

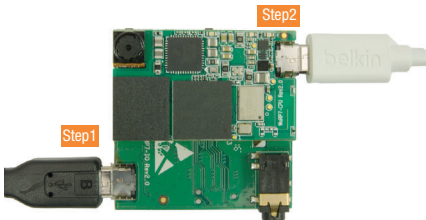
WaRP7 CPU Board



- | | |
|---|--|
| <ul style="list-style-type: none"> 13. MIPI CSI Camera 14. Power Management IC 15. Memory 8GB eMMC w/ 4GB LPDDR3 16. i.MX7S (ARM® Cortex®-A7 and Cortex-M4 cores) | <ul style="list-style-type: none"> 17. Wireless Module Wifi 801.11b/g/n + BT/BLE 18. USB OTG (power) 19. Board-to-Board Connectors 20. MIPI CSI Camera Connector |
|---|--|

Board Set Up

01. Connect one end of the USB cable to the micro-B USB OTG (Debug) connector (4) on IO Board and the other end to a USB port of your PC. Start an hyperterminal program like Tera Term, connect to the COM port for your board and change the baud rate to 115200.
02. Connect a 5V USB power source to the micro-B USB OTG (Power) connector (18) on CPU Board to power WaRP7. You should see two Green LEDs lighting. The hyperterminal window should now display UBoot and Linux boot messages.
03. For more help on WaRP7 board setup, consult the Hardware guide at www.element14.com/warp7



Those terms constitute a legal agreement between you, as an authorized representative of your employer (together “you”), and NXP Semiconductor, Inc. (“NXP”) and its Affiliates. It concerns your rights to use this software and any accompanying written documentation (the “Licensed Software”). Your accessing the Licensed Software is your agreement to be bound by the terms of the Agreement. If you do not agree to all of the terms of the Agreement, do not use the Licensed Software. If at any point you no longer agree to all the terms of this Agreement, stop using the Licensed Software immediately and delete all copies of the Licensed Software in your possession or control.