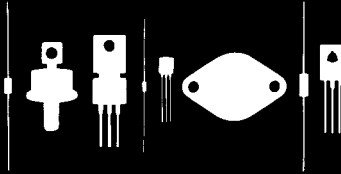


Central Semiconductor Corp.

**Central Semiconductor Corp.**  
**Central Semiconductor Corp.**

145 Adams Avenue  
 Hauppauge, New York 11788



**1N4614 THRU 1N4627**

**250 mW LOW NOISE ZENER DIODE**  
**1.8 VOLTS THRU 6.2 VOLTS**  
**5% TOLERANCE**

**JEDEC DO-35 CASE**

**DESCRIPTION**

The Central Semiconductor 1N4614 Series Silicon Zener Diode is a high quality voltage regulator designed for low leakage, low current and low noise applications. Higher voltage devices are available in the 1N4099 series.

**ABSOLUTE MAXIMUM RATINGS**

Power Dissipation (@  $T_A = 25^\circ\text{C}$ )  
 Operating and Storage Temperature  
 Tolerance (No Suffix)  
 Tolerance "C Suffix"  
 Tolerance "D Suffix"

**SYMBOL**

$P_D$  250  
 $T_J, T_{STG}$  -65 to +200  
 ±5  
 ±2  
 ±1

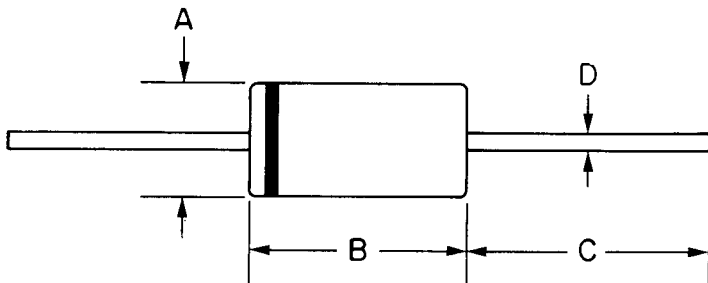
**UNIT**

mW  
 $^\circ\text{C}$   
 %  
 %  
 %

**ELECTRICAL CHARACTERISTICS** ( $T_A = 25^\circ\text{C}$ ,  $V_F = 1.0\text{V MAX @ } I_F = 200\text{ mA}$ ).

TYPE	Zener Voltage	Test Current $I_{ZT}$	Maximum Zener Impedance $Z_{ZT@I_{ZT}}$	Maximum Reverse Leakage Current		Maximum Zener Current $I_{ZM}$	Maximum Noise Density
	$V_Z@I_{ZT}$			$I_R@V_R$			$N_D@I_{ZT} = 250\mu\text{A}$
	Volts	$\mu\text{A}$	$\Omega$	$\mu\text{A}$	Volts	mA	$\mu\text{V}/\sqrt{\text{Hz}}$
1N4614	1.8	250	1200	7.5	1.0	120	1.0
1N4615	2.0	250	1250	5.0	1.0	110	1.0
1N4616	2.2	250	1300	4.0	1.0	100	1.0
1N4617	2.4	250	1400	2.0	1.0	95	1.0
1N4618	2.7	250	1500	1.0	1.0	90	1.0
1N4619	3.0	250	1600	0.8	1.0	85	1.0
1N4620	3.3	250	1650	7.5	1.5	80	1.0
1N4621	3.6	250	1700	7.5	2.0	75	1.0
1N4622	3.9	250	1650	5.0	2.0	70	1.0
1N4623	4.3	250	1600	4.0	2.0	65	1.0
1N4624	4.7	250	1550	10	3.0	60	1.0
1N4625	5.1	250	1500	10	3.0	55	2.0
1N4626	5.6	250	1400	10	4.0	50	4.0
1N4627	6.2	250	1200	10	5.0	45	5.0

R2



HERMETICALLY SEALED GLASS CASE WITH TINNED COPPER LEADS

DIM	INCHES		MILLIMETERS	
	MIN	MAX	MIN	MAX
A	.060	.080	1.52	2.03
B	.140	.160	3.60	4.10
C	1.0	—	25.4	—
D	.018	.022	0.46	0.56

145 Adams Avenue, Hauppauge, NY 11788 USA  
 Tel: (631) 435-1110 • Fax: (631) 435-1824