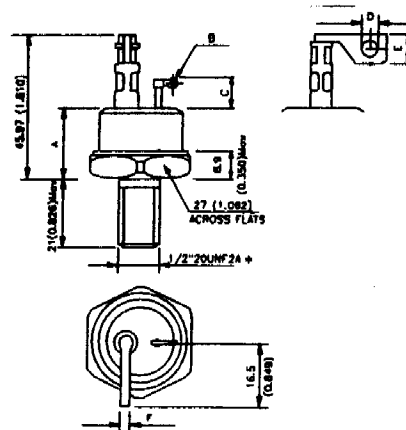


2N1792 - 2N1804

Part Number	V _{RRM} V _{DRM} (V)	I _T (RMS) (A)	I _T (AV) @ T _c		I _{TSM} (1)		V _{GT} (2) (V)	I _{GT} (2) (mA)	V _{TM} (3) (V)	dv/dt (4) (V/μs)	R _{thJC} DC (°C/W)	Case Outline Number (11)
			(A)	(°C)	50 Hz (A)	60 Hz (A)						
			2N1792	50	110	70						
2N1793	100											
2N1794	150											
2N1795	200											
2N1796	250											
2N1797	300											
2N1798	400											
2N1799	500											
2N1800	600											
2N1801	700											
2N1802	800											
2N1803	900											
2N1804	1000											

T7A
T7B



* FOR METRIC DEVICE: M12 = 1.75 E 0

	A	B	C	D	E	F	
mm	20.5	1.8	9.5	5.5	10	2.5	T7 A
inches	(0.807)	(0.07)	(0.374)	(0.22)	(0.393)	(0.098)	
mm	20.4	1.85	9.77	5.28	10.16	2.52	T7 B
inches	(0.803)	(0.085)	(0.388)	(0.208)	(0.400)	(0.115)	

